

COVID-19 Vaccine Update

Paul Simon, MD, MPH

Chief Science Officer

Los Angeles County Department of Public Health

Jocelyn Estiandan, MPH

Senior Public Health Analyst

Los Angeles County Department of Public Health

March 2, 2021



Disclaimer:

- This is a rapidly evolving situation so some of the information presented today may soon become outdated. For the most current information on COVID-19 vaccinations, go to:

vaccinatelacounty.com

- For general information about COVID-19, go to:

publichealth.lacounty.gov/media/Coronavirus/

- Information for health care providers can be found at:

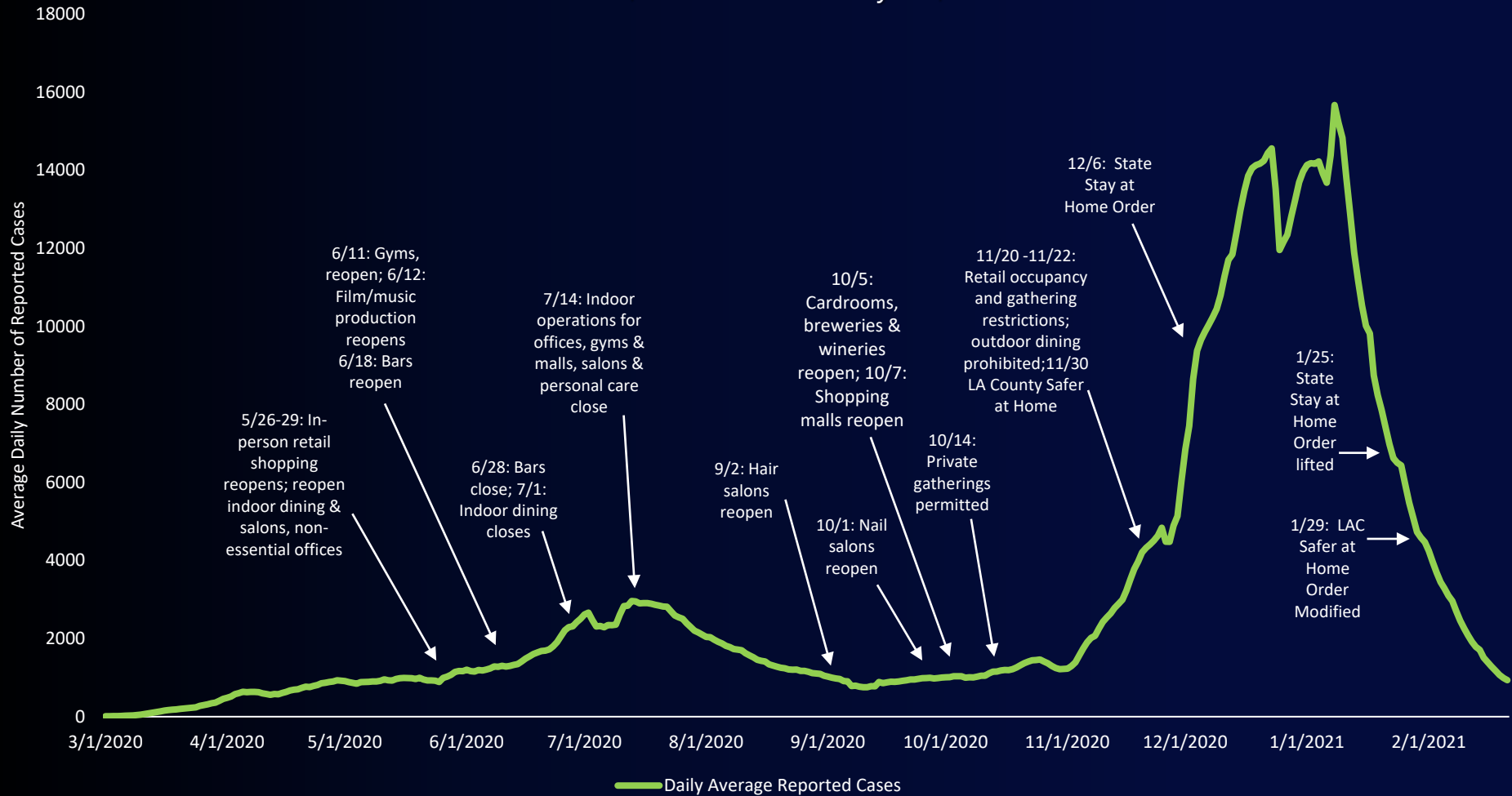
publichealth.lacounty.gov/acd/ncorona2019/

Topline Numbers and Impacts

- ❑ Nearly 1.2 million reported COVID-19 cases
- ❑ Over 21,000 COVID-19 deaths (leading cause of death)
- ❑ An estimated 3-4 million county residents have had the infection to date.
- ❑ Related health and mental health impacts
- ❑ Devastating economic impacts



Daily Number of COVID-19 Cases by Episode Date, Past 7-day Average March 1, 2020 to February 21, 2021



covid19.lacounty.gov

COVID-19 Vaccines

- ❑ Pfizer-BioNTech (received EUA Dec. 11th)
- ❑ Moderna (EUA Dec. 18th)
- ❑ Johnson & Johnson (EUA Feb. 27th)
- ❑ Other promising vaccines
 - ❑ Oxford-AstraZeneca
 - ❑ Novavax



Vaccine Trial Results: Key Points

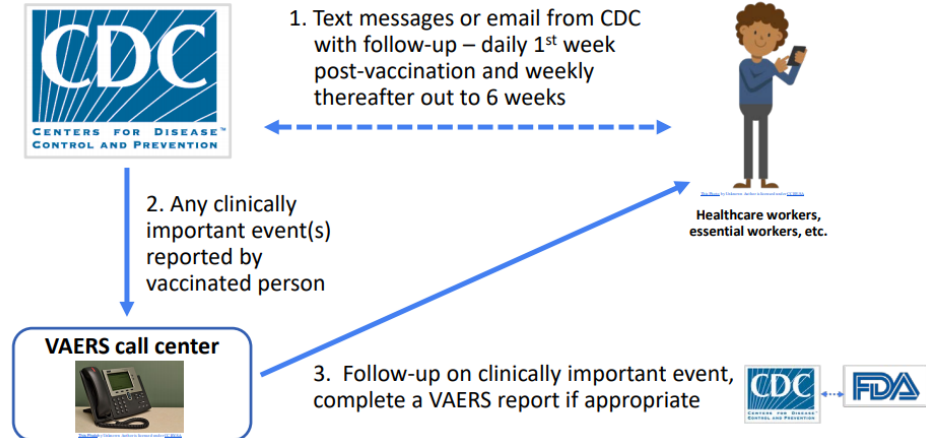
- ❑ All three vaccines highly efficacious
- ❑ Efficacy observed across multiple sub-groups
- ❑ Strong safety profiles
- ❑ Caveats:
 - ❑ Only 2 months of follow-up
 - ❑ Only measured symptomatic disease
 - ❑ Children, pregnant women, those with immunodeficiency not included
 - ❑ Limited power to detect rare adverse events



Reporting Adverse Events

- Mandatory reporting to VAERS :
 - Vaccine administration errors whether associated with an adverse event
 - Serious adverse events (irrespective of attribution to vaccination)
 - Multisystem Inflammatory Syndrome in children and adults
 - Cases of COVID-19 that result in hospitalization or death
- V-safe is a new smartphone-based opt-in program
 - Telephone follow-up to anyone who reports medically important adverse events
 - Missed work, inability to do daily activities, or receiving healthcare triggers VAERS Call Center

Vaccine safety assessment for essential workers (V-SAFE)



VAERS

Vaccine Adverse Event
Reporting System

Co-managed by
CDC and FDA

<http://vaers.hhs.gov>

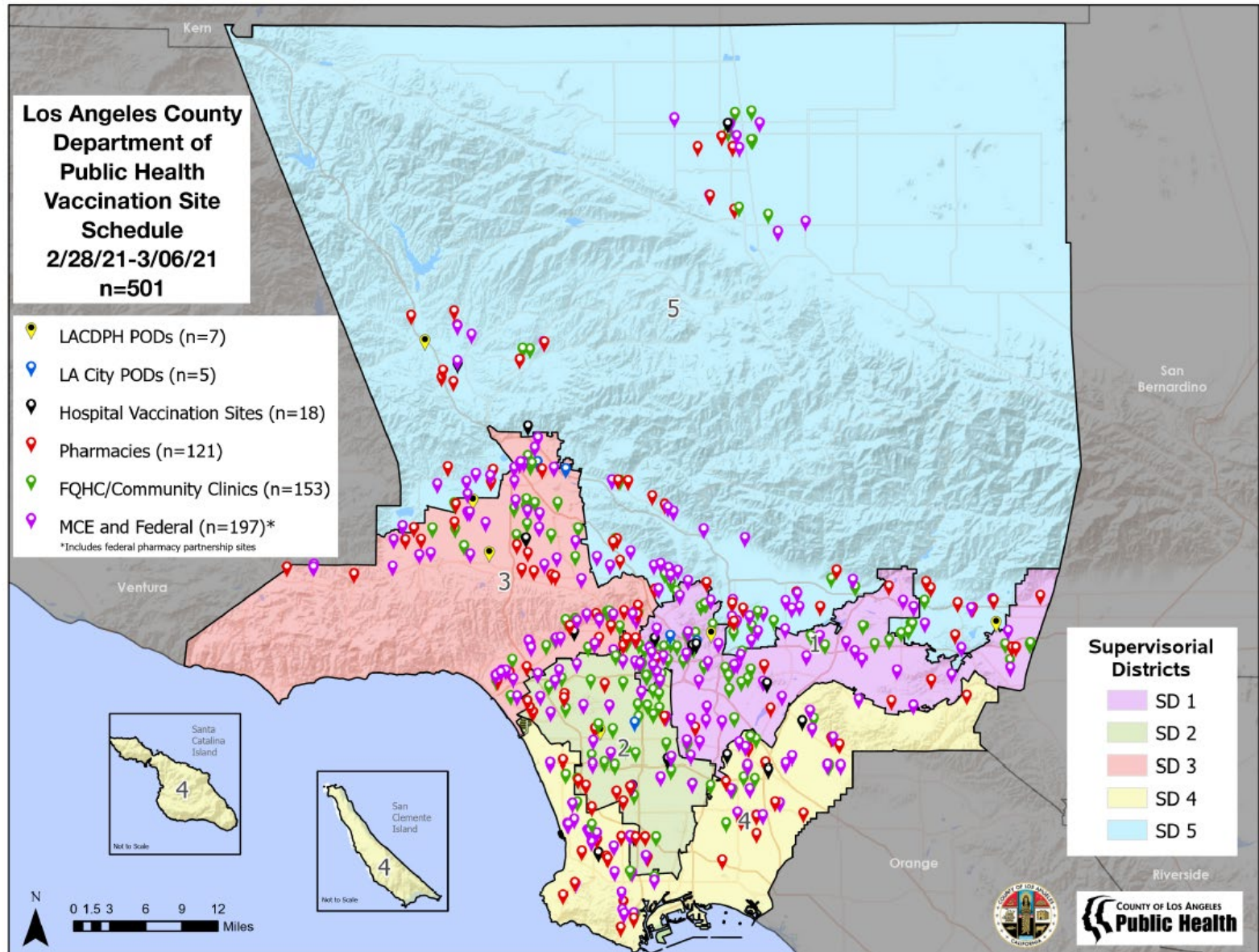




Mass Vaccination Campaign



Los Angeles County Vaccination Sites (week of 2/28/21)



COVID-19 Vaccine Update

As of 2/25/2021

Total Doses Administered: 1,958,547

Second Doses: 600,497



covid19.lacounty.gov

Race/Ethnicity of People 16 Years and Older Who Have Received
At Least 1 Dose of Vaccine (As of 2/20/21)*

| Race/Ethnicity | Total Doses | % of overall Doses |
|----------------------------------|------------------------|-------------------------------|
| American Indian/Native Alaskan | 3,000 | 0.2 |
| Asian | 234,979 | 18.8 |
| Black/African American | 67,044 | 5.4 |
| Native Hawaiian/Pacific Islander | 7,675 | 0.6 |
| Latinx | 288,341 | 23.1 |
| White | 418,543 | 33.5 |
| Multi-race | 19,899 | 1.6 |
| Other | 165,670 | 13.3 |
| Unknown | 45,419 | 3.6 |
| Total | 1,250,570 | 100 |

Age Group of People 16 Years and Older Who Have Received
At Least 1 Dose of Vaccine (As of 2/20/21)*

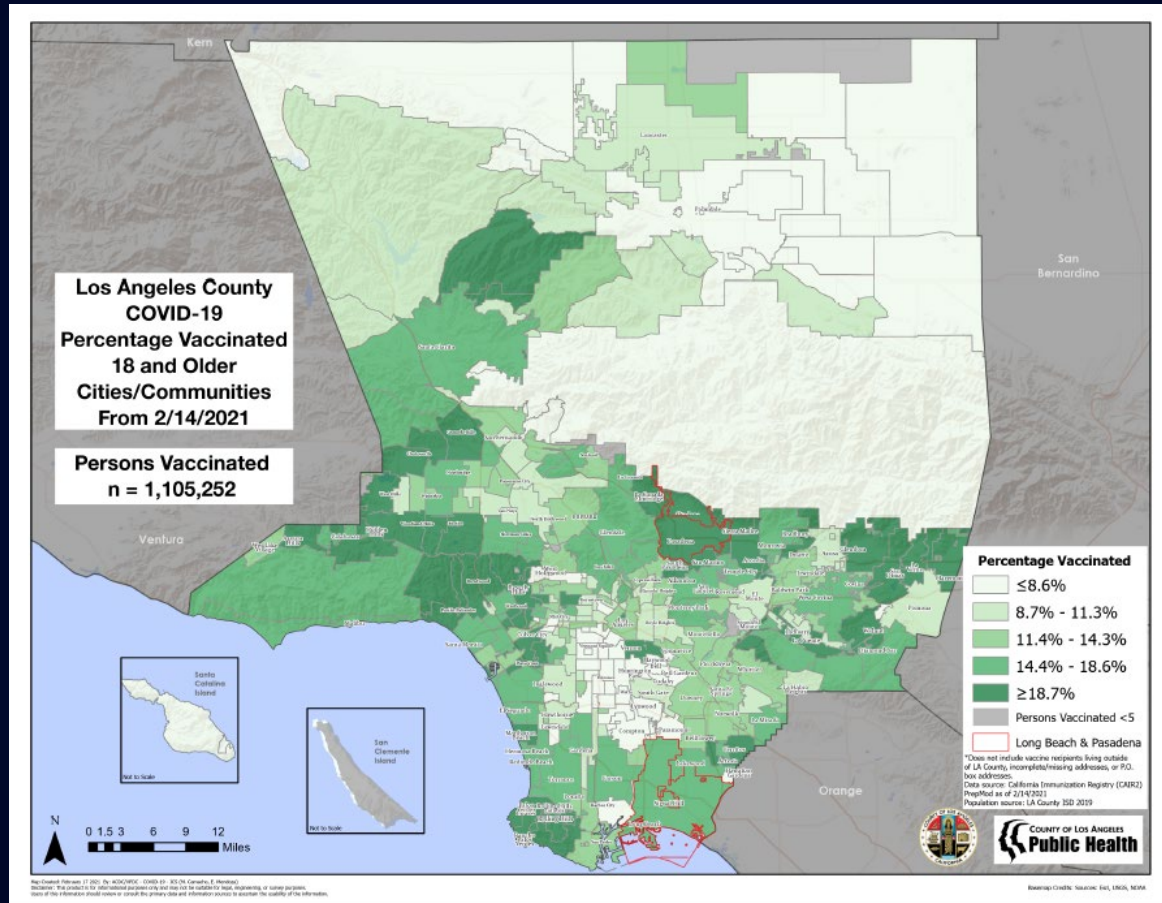
| Age Group | Number | % of total |
|-----------|---------|------------|
| 16-29 | 101,688 | 8.1 |
| 30-49 | 272,334 | 21.8 |
| 50-64 | 209,270 | 16.7 |
| 65-79 | 503,521 | 40.3 |
| 80+ | 163,660 | 13.1 |

*People for whom age data are available from California Immunization Registry (CAIR)/Prepmo data system/hospital line list

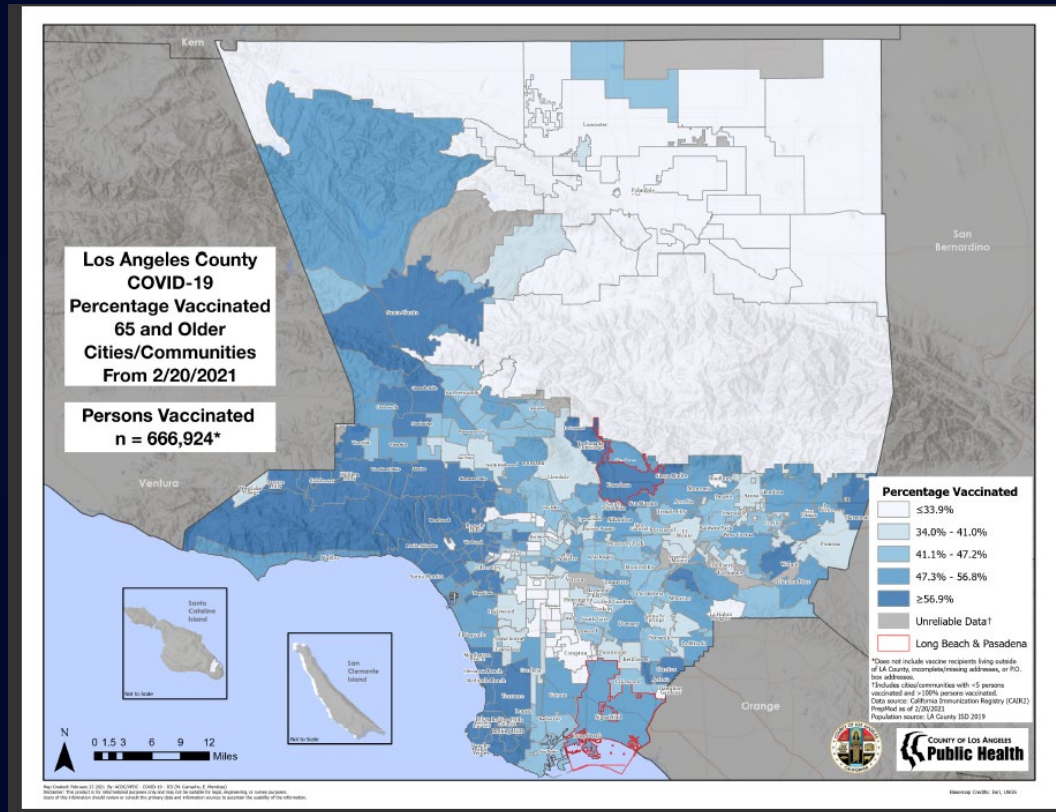
Cumulative Percent of Population 65 and Older who have Received at Least 1 Dose of Vaccine, by Week and Race/Ethnicity

| Race/Ethnicity | 2/9/2021 | 2/14/2021 | 2/20/2021 | Relative Percentage Increase |
|-------------------------------|----------|-----------|-----------|------------------------------|
| American Indian/Alaska Native | 28.0 | 31.7 | 38.4 | 37.1 |
| Asian | 36.6 | 39.4 | 44.6 | 21.9 |
| Black/African American | 20 | 24 | 28.9 | 44.5 |
| Latinx | 26 | 29.3 | 34.3 | 31.9 |
| White | 38.2 | 42.8 | 47.8 | 25.1 |
| All | 37.9 | 42.5 | 48.6 | 28.2 |





Cumulative Percent of Population 65 and Older who have Received at Least 1 Dose of Vaccine, by City/Community



covid19.lacounty.gov

2/26/2021

Measures to Address Vaccine Coverage Inequities

- Prioritizing new vaccination sites in communities with the lowest vaccination coverage rates
- Expansion of mobile vaccination units to seniors and others who have limited mobility
- Expansion of transportation support services to those who are unable to travel to a vaccination site
- Community outreach with information in multiple languages on available vaccination services

When can I get the Vaccine?

| | |
|--|---|
| ACTIVELY VACCINATING PHASE 1A <ul style="list-style-type: none">• Healthcare Workers• Staff & Residents at Skilled Nursing Facilities• Staff & Residents at Long-Term Care Facilities PHASE 1B Tier 1 <hr/> <ul style="list-style-type: none">• LA County Residents 65 and Older | ESTIMATED TIMELINE FOR REST OF PHASE 1B March Tier 1 <hr/> <ul style="list-style-type: none">• Education and Childcare• Emergency Services• Food and Agriculture <p>The state has announced that it is changing its vaccine rollout strategy in California after completion of Phase 1B, Tier 1 (Education and Childcare, Emergency Services, Food and Agriculture). The state plans to transition to age-based eligibility, allowing California to scale up and down quickly, while ensuring vaccine goes to disproportionately impacted communities.</p> |
|--|---|

Visit VaccinateLACounty.com
for details and updates

Call Center:
833-540-0473

March 1st New Sector Eligibility

| |
|---|
| Food service workers |
| Food manufacturing |
| Grocery store workers |
| Grocery store workers (without pharmacies) |
| Animal agriculture workers including those involved in Vet health |
| Veterinarians |
| Food and Agriculture-associated Port and transportation workers |
| TOTAL IN THIS SECTOR |

| |
|---------------------------------|
| Teachers (K-12, Preschool) |
| Support staff (K-12, Preschool) |
| Childcare |
| Independent Schools |
| Junior Colleges |
| Colleges & Universities |
| TOTAL IN THIS SECTOR |

| |
|--|
| Police/law enforcement officers |
| Emergency Management, Search and Rescue, Emergency and public safety communication centers, EOCs |
| National Security |
| Maritime and Aviation Response (TSA) |
| Corrections officers and workers |
| Courts/Legal Counsel & Prosecution |
| Campus and school police |
| Rehabilitation and Re-entry |
| Federal law enforcement agencies |
| Police, Fire and Ambulance Dispatchers |
| Security staff to maintain building access control and physical security measures |
| DCFS, APS (workers physically responding to abuse and neglect of children, elderly and dependent adults) |



Required Documentation

- Proof of identify (photo ID; does not need to be govt issued)
- Proof that you live or work in LA County
- Proof that you work in an eligible sector
- One document can cover more than one criterion (your photo ID shows your address in LA County)
- Examples:
 - Badge with photo
 - Professional license
 - Payment stub with your name
 - Copy of work shift schedule with your name (Food & Agriculture)
 - Attestation letter



covid19.lacounty.gov

2/26/2021

Vaccine Allocation by Site

| Site | Active sites | Doses | % | Site capacity * | %** |
|--------------|--------------|----------------|--------------|-----------------|-------|
| ACH Clinics | 19 | 22,830 | 8.5 | 79,500 | 28.7 |
| LA City PODs | 6 | 70,000 | 25.9 | 119,900 | 58.4 |
| DPH PODs | 7 | 59,670 | 22.1 | 152,000 | 39.3 |
| DHS Clinics | 13 | 8,150 | 3.0 | 8,000 | 101.9 |
| FQHC/Clinics | 148 | 55,520 | 20.6 | 60,700 | 91.5 |
| Pharmacies | 121 | 34,160 | 12.7 | 40,300 | 84.8 |
| SNFs | 0 | 0 | 0.0 | N/A | |
| Mobile teams | 7 | 14,690 | 5.4 | 23,600 | 62.2 |
| Dialysis | 11 | 1,900 | 0.7 | 3,840 | 49.5 |
| Others | 9 | 3,000 | 1.1 | 10,400 | 28.8 |
| Total | 341 | 269,920 | 100.0 | 498,240 | |

*Appointments per week with current staffing, structures

**Percent of weekly capacity utilized with current doses



covid19.lacounty.gov

| Sector | Doses | % | % Tiers | Goal* |
|---------------------------|----------------|-------------|------------|-------|
| Education# | 31,240 | 11.6 | 30.3 | 29.1 |
| Emergency response | 6,400 | 2.4 | 6.2 | 6.2 |
| Food & Agriculture | 28,470 | 10.5 | 27.6 | 27.8 |
| Seniors 65+ | 36,920 | 13.7 | 35.8 | 36.9 |
| <i>1st doses closed</i> | <i>103,030</i> | <i>38.2</i> | <i>100</i> | |
| Open to any 1B | 26,970 | 10.0 | | |
| <i>1st doses subtotal</i> | <i>130,000</i> | <i>48.2</i> | | |
| 2nd doses due | 139,920 | 51.8 | | |
| <i>Total</i> | <i>269,920</i> | <i>100</i> | | |

*Based on population estimates from sector planning guide

#Includes 5% independent schools, total other
K-12 11%

Future Considerations

- ❑ Managing vaccine supply and demand
- ❑ Transitioning to a statewide vaccine provider network with a 3rd party administrator—Blue Shield of California
- ❑ Addressing inequities in vaccination coverage
- ❑ Overcoming vaccine hesitancy
- ❑ Monitoring and responding to emerging variants



Beware of the myths Get the facts!

Common myths:

- It was developed too fast
- It will kill more people than COVID-19
- It can give you COVID-19
- It can affect our genes.
- It contain dangerous chemicals
- It contains a microchip that can be used to track my movements
- It is being pushed on people against their will.
- You can't trust the people who made these vaccines.
- Black and Latinx communities are being singled out to get the vaccine
- I don't need the vaccine if I already had COVID-19

MYTHS!

COVID-19 (Coronavirus Disease)

YOUR HEALTH

Facts about COVID-19 Vaccines

Updated Dec 7, 2020

FACT:

Now that the crisis is over, it's time to get the facts.

8 Things to Know

Who Gets Vaccinated First?

None of the COVID-19 vaccines have been approved for use in the United States.

What to Expect on Your Vaccine Appointment

Benefits of Getting Vaccinated

It typically takes 2-3 weeks to get the vaccine.

Facts about Vaccination

Los Angeles County

MYTHS ABOUT COVID-19 VACCINES

Myth 1: The vaccine was developed too fast – I don't think they know enough about it.

The Fact: These vaccines could be made fast, and will be safe for three simple reasons:

- There was a lot of research done on the kind of virus that causes COVID-19 before this virus showed up. Scientists had a big head start about the kind of vaccine that would work best to fight this virus.
- A lot of government money was spent to get many companies to work on this vaccine and no part of their scientists' work was to be around the clock. They helped speed everything up.
- While every step after that has to be followed, science is a team effort and be sure it is safe was followed, some of the steps were done at the same time instead of one after another. It is like cooking several parts of a meal at once instead of cooking one course at a time. You get done sooner but it's just as good.

In fact, the two vaccines that have been approved so far are safer. COVID-19 was studied on more than 70,000 volunteers, including adults of all ages and different racial and ethnic groups, and were found to work very well and be equally safe for all.

Myth 2: Only 1% of people who get COVID-19 die of it. Won't the vaccine kill more people than that?

The Fact: COVID-19 is a lethal disease. Seasonal flu can be very dangerous, but it kills about one person in every thousand infected, while COVID-19 kills one out of a hundred people who are infected. No one has died from the two approved vaccines.

- Some people wonder if they could be just because volunteers who took part in vaccine trials were not as old as the people who are getting the vaccine. In fact, the vaccine trials only have 2 months of experience watching people who get these vaccines, but we do have experience with other vaccines and the vast majority of all effects show up within hours or days. There is no truth to believing we will see something different here.

Myth 3: The vaccine will make you sick with COVID-19.

The Fact: The current vaccines don't include the virus in any form – no live virus, no weakened virus, no dead virus. You just cannot get the disease from the vaccine.

- Some other vaccines use the virus they are fighting. In some cases, the virus can change up its immune response. The current COVID-19 vaccines do not work that way so there is no way they could give you COVID-19.
- It is possible to catch the disease in the first few days after your vaccination before the vaccine has a chance to work, but that would not mean you got sick from the vaccine. For most people, the vaccine needs 7 days before it starts to work. And both these vaccines require a second dose before a person is fully protected from getting sick from the virus. It is easy to be confused about this, because you might feel some side effects for a while after getting the vaccine. In fact, about half of the volunteers who received these vaccines experienced some side effects more than 2 weeks after vaccination and did not require any treatment or change in daily activity and lasted for 3-5 days. What they were feeling was not COVID-19, however, nor even a mild case of COVID-19. They were feeling the symptoms of an

Los Angeles County Department of Public Health
www.publichealth.lacounty.gov
1/17/21 COVID-19 Vaccine Info - English

- 1 -

DPH website

CDC website

Look out for scams



If someone says they can...

- Get you a special low-cost deal or get you the vaccine under the table
- Get you a place on a waiting list
- Sell you a vaccine or “miracle cures”

.....it's a scam!

Report a possible COVID-19 scam

Contact the LA County Department of Consumer and Business Affairs (DCBA): dcba.lacounty.gov or 800-593-8222

They can also help you try to get your money back

Protect your personal or financial information

If you get calls, texts, or emails, be careful what you share.

Be a smart health care consumer

COVID-19 Vaccine Scams

Scammers often use tactics such as impersonating health care providers or other officials, offering special deals, or claiming to have inside information about the vaccine. They may also use social media to spread false information. Be alert for signs of a scam, such as requests for money, personal information, or payment for a vaccine that is not yet available.

COVID-19 vaccine is being distributed in Los Angeles County in a fair and transparent way. If someone offers to sell you a chance to get vaccinated before it is your turn, it's a scam.

- Waiting is only going to get you a chance to get vaccinated before it is your turn. It's a scam.
- Health care providers who have access to their names are doing so in the official vaccine distribution system. They are not selling or offering to sell you a chance to get vaccinated before it is your turn. They are not offering to sell you a chance to get vaccinated before it is your turn.
- Children under 18 years of age will not be offered vaccine in the near future. The vaccine is not allowed to be given to this age group.
- Health care providers who have access to their names are doing so in the official vaccine distribution system. They are not selling or offering to sell you a chance to get vaccinated before it is your turn. They are not offering to sell you a chance to get vaccinated before it is your turn.
- Information about how to get the vaccine will be posted on the County's website [COVID-19 vaccine](https://www.lacounty.gov/covid-19-vaccine) when vaccine is available for different groups.
- If you have questions, ask for your doctor. Call 311 or visit the [COVID-19 vaccine](https://www.lacounty.gov/covid-19-vaccine) if you need help finding a doctor.

COVID-19 vaccine will be given to Los Angeles County residents at no cost and regardless of immigration status. If someone says they can get you a special, low cost deal, or get you the vaccine under the table, it's a scam.

- You will not be charged a fee at any time to receive a COVID-19 vaccine. The doctor or pharmacy may charge a fee for giving the vaccine, but it should be covered by your private insurance company. People without health insurance can get COVID-19 vaccine for free.
- You do not need to provide your immigration status when you get a COVID vaccine. Your medical information is private. Your doctor is not allowed to share it with immigration officials.
- Visit the Los Angeles County [COVID-19 vaccine](https://www.lacounty.gov/covid-19-vaccine) for updates on COVID-19 for immigrant residents.

A RED FLAG is a warning sign or signal that something might be a scam. Look out for these COVID-19 vaccine red flags:

- Someone offers to make you into an "elder group" to get the vaccine for a fee.
- Someone tries to get you a place in a COVID vaccine waiting list. There is no "vaccine waiting list".
- Someone offers to make you an "elder group" to get the vaccine for a fee.
- Someone offers to make you an "elder group" to get the vaccine for a fee.
- Someone offers to make you an "elder group" to get the vaccine for a fee.

Be a smart health care consumer

Los Angeles County Department of Consumer and Business Affairs
311 or dcba.lacounty.gov
COVID-19 Vaccine Scams 12.15.20

DPH Appointment Website

Translate A-Z Index [A](#) [B](#) [C](#) [D](#) [E](#) [F](#) [G](#) [H](#) [I](#) [J](#) [K](#) [L](#) [M](#) [N](#) [O](#) [P](#) [Q](#) [R](#) [S](#) [T](#) [U](#) [V](#) [W](#) [X](#) [Y](#) [Z](#) [ALL](#) Font Size | [A](#) [A](#) [A](#)

 Communications & Public Affairs

[COVID-19 Home](#) [About COVID-19](#) [Guidances](#) [Protection](#) [News Updates](#) [Help](#)

COVID-19 VACCINE

Información en español



Book an Appointment
Appointments & Doses are Limited.

Vaccine Distribution Data
(Doses, Maps, Demographics)

Sign up for the **VACCINE NEWSLETTER**

★Email Address

[General Information](#) +

[Distribution Plans](#) +

[Learn How to Secure Second Dose Appointments](#)

VaccinateLACounty.com
vacunatelosangeles.com/ (Spanish)

DPH Appointment Website

Translate A-Z Index A B C D E F G H I J K L M N O P Q R S T U V W X Y Z ALL Font Size | A A A

COUNTY OF LOS ANGELES
Public Health

Acute Communicable Disease Control

For Healthcare Providers: **COVID-19 Hub** **Vaccine Hub** For Everyone: **VaccinateLACounty.com**



COVID-19 Vaccine

Vaccination Appointments

How to make an appointment

[Ver página en español](#)

- 1 Check to see if you are eligible for vaccination +
- 2 Check the type of vaccine you need +
- 3 Look for an appointment +

Preparing for your appointment

- 4 Required documentation +
- 5 At your appointment +

After your appointment

- 6 After you get a vaccine
- 7 Second dose information

Visit
VaccinateLACounty.com
for details and updates

Call Center:
833-540-0473
8:00 a.m. – 8:30 p.m.
7 days a week
Interpreters available

Continue to take steps to stop the spread

While you wait for a vaccine and even after you are vaccinated it is important to:

- Wear a face covering
- Avoid close contact and crowded spaces
- Wash your hands often
- Clean and disinfect frequently touched surfaces
- **Follow isolation and quarantine guidance**



