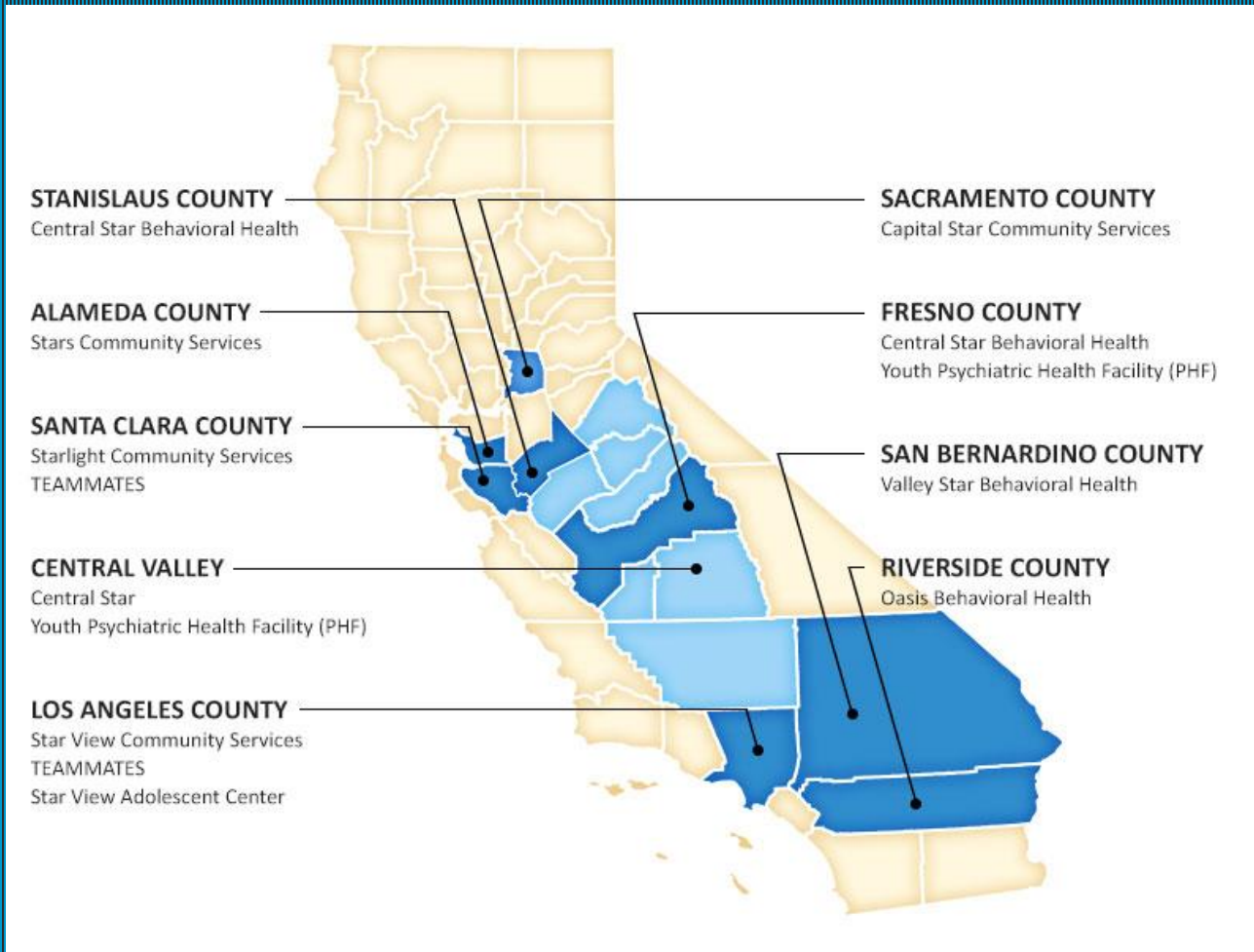


ABOUT STARS BEHAVIORAL HEALTH GROUP



- In operation since 1988
- Locations in 8 California counties
- Experience running crisis and acute care programs
- Experience working with and in the community

Partnering with People for Positive Change

WHAT IS A BHUCC?

Long Beach BHUCC



- LPS certified - Crisis Stabilization service
- Up to 12 Adults and 6 Adolescents
- Voluntary and Involuntary
- 24/7 Outpatient Program
- Patients may stay up to 24 hours
- Average stay is 4 to 6 hours

City of Industry BHUCC



WHAT SERVICES DO WE PROVIDE?



- Assessment by nursing staff and psychiatric assessment
- Case management and linkage to services
- Warm handoff to higher level or lower level of care
- Transportation for all patients to their destination as needed and appropriate
- Patients can stay the night
- 5150; 5585 designation as needed

WHAT IS A CWIC?



- Crisis Walk-In Center
- Operated from 8 a.m. to 8 p.m. daily
- Estimate average 30 clients per day
- Immediate psychiatric assessment and case management services
- Medication prescription on urgent basis

WHO ARE OUR STAFF?



- Psychiatrists
- Psychiatric Nurse Practitioners
- RNs/ LVNs
- Mental Health Therapists
- Recovery Counselors
- Peer & Family Advocates
- Safety Specialists



LONG BEACH URGENT CARE CENTER



Adult Unit



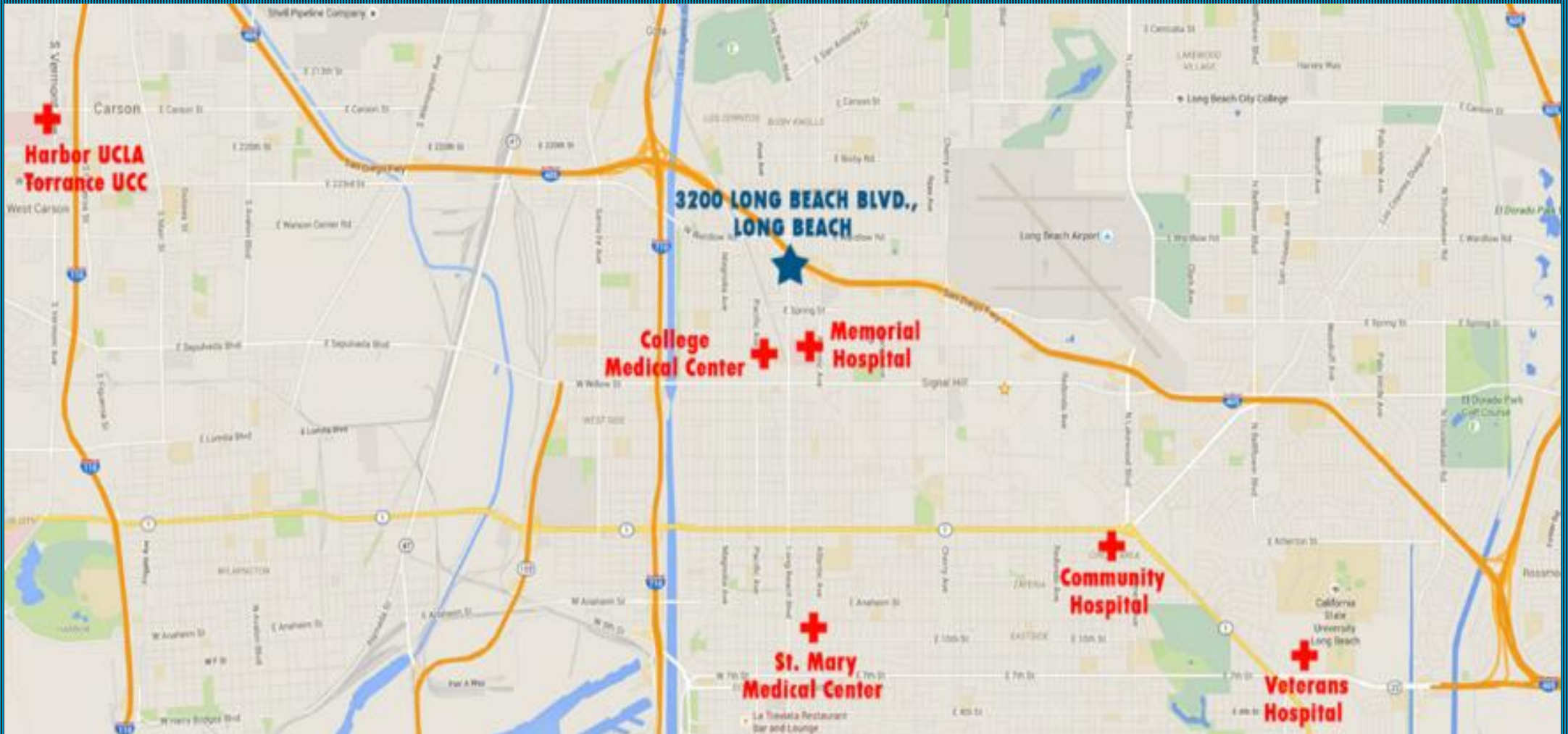
Front Entrance to the CWIC



Adolescent Unit

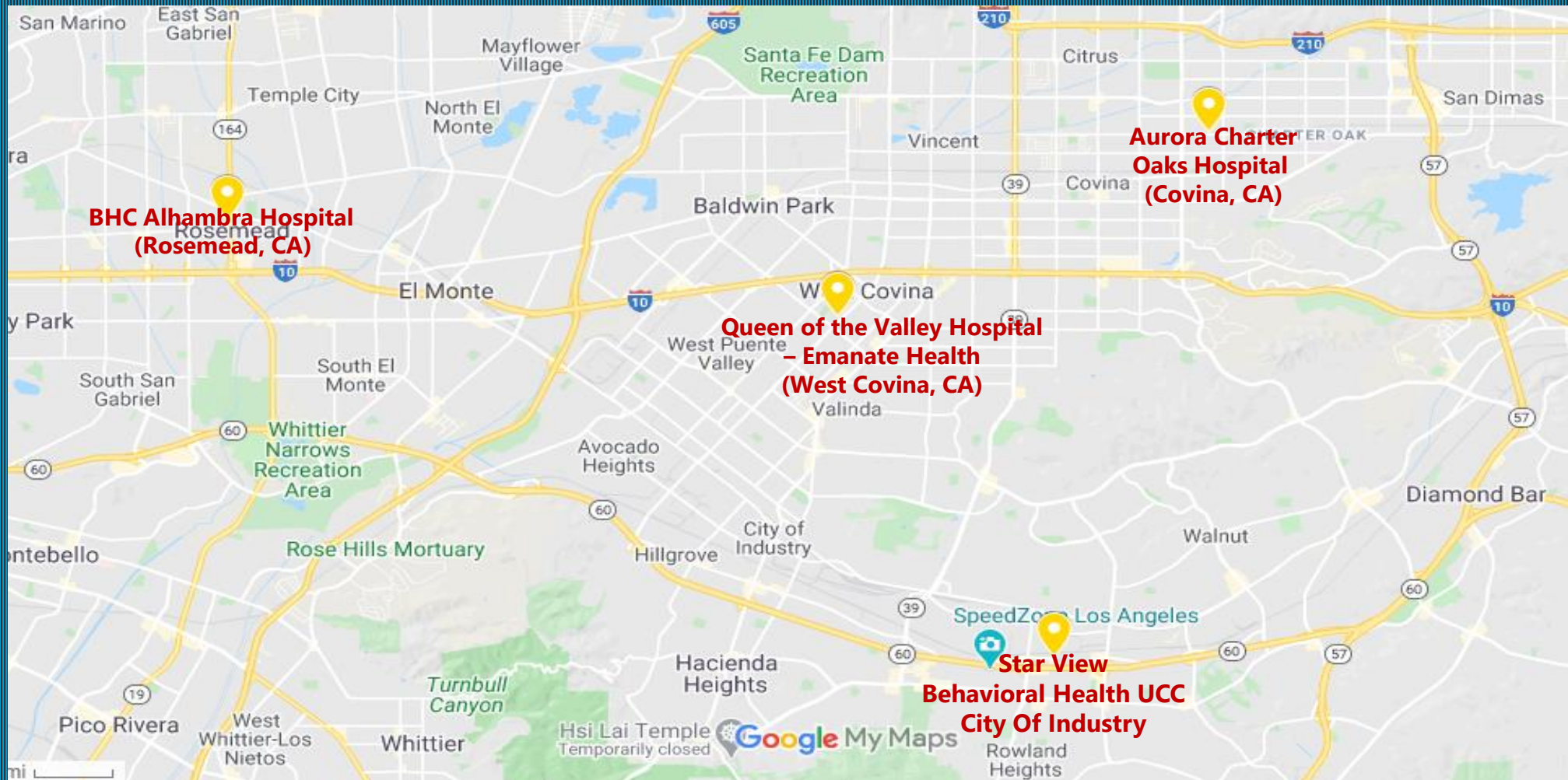


3210 LONG BEACH BLVD.
LONG BEACH, CA 90807



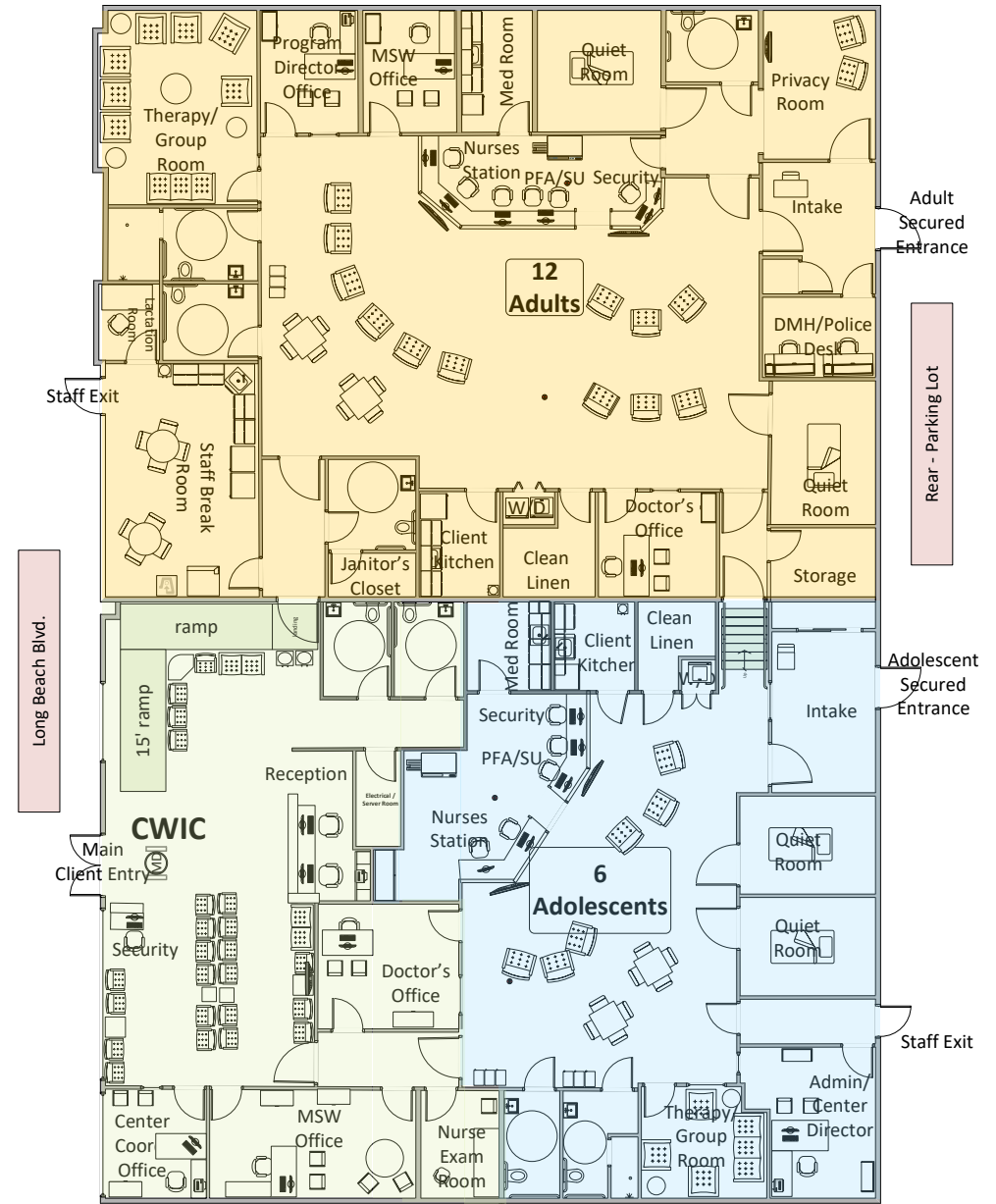


18501 GALE AVE.
CITY OF INDUSTRY, CA 91748



LONG BEACH

9,000+/- Sq. Ft.



Star View Behavioral Health
Urgent Care Center

3210 Long Beach Blvd.
 Long Beach, CA 90807



Revision date
 5/14/18

CITY OF INDUSTRY

9,000+/- Sq. Ft.

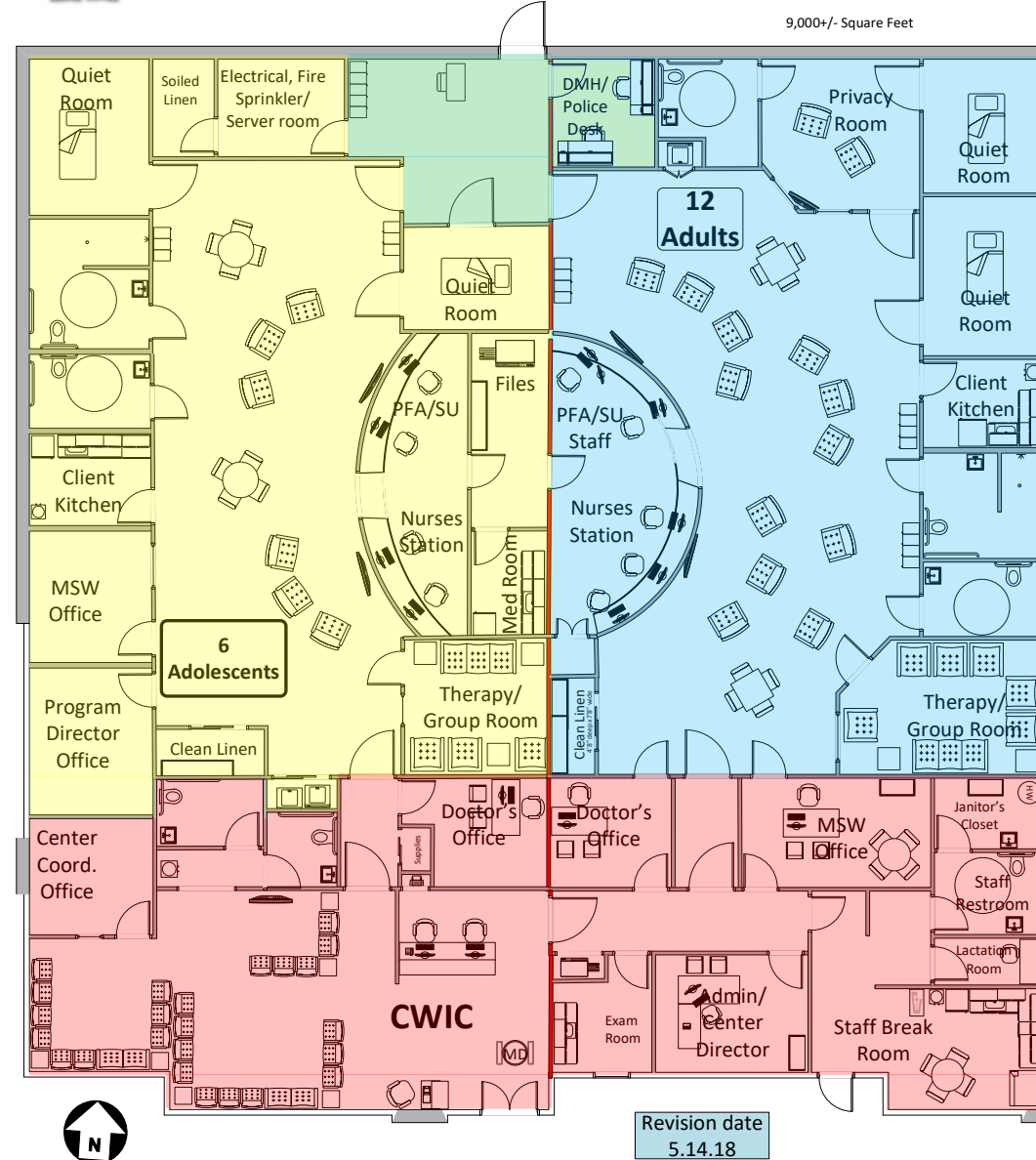


Star View Behavioral Health
 Urgent Care Center



18501 GALE AVE, STE 100
 CITY OF INDUSTRY, CA 91748

9,000+/- Square Feet



BENEFIT TO THE COMMUNITY



- Relieves Emergency Rooms
- Frees up law enforcement
- Reduces unnecessary in-patient psychiatric hospitalizations
- Reduces homelessness through linkage to appropriate treatment & resources
- Increases community safety by providing treatment to those in most need

QUESTIONS?



- Who are the contacts we should be making in the months prior to opening?
- Who should we be partnering with (educating about these new services) to both receive referrals as well as direct clients post crisis intervention?
- Beyond what we have presented today, is there additional information you feel would be helpful to communicate to people about the program?